



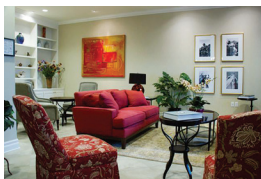
San Diego Fisher Houses

San Diego Fisher Houses
34800 Bob Wilson Drive, San Diego, CA 92134
619-532-9055
@FisherHouseSanDiego



Located on the grounds of Naval Medical Center San Diego, the two San Diego Fisher Houses are within walking distance to the main hospital

wards. The first Fisher House opened its doors in 1992 and the second in 2008. Both Houses are comfortably furnished with nine private guest suites, fully-equipped kitchens, living rooms, dining rooms, laundry facilities, and outdoor seating areas. All guest suites are furnished with cable TV, phone with local and long-distance service, iron/ironing board, and hair dryer. High-speed Wi-Fi access is available throughout the entire facility. The San Diego Fisher Houses can accommodate up to 60 family members.



Naval Medical Center San Diego's number one priority is providing the safest, highest quality patient-centered medical care for veterans, service

members and their families. Naval Medical Center San Diego has the only Navy Medicine amputee center in the Western Pacific and is the only facility in San Diego that employs four state-of-the-art "3T-Tesla" MRI units. Throughout its proud history, Naval Medical Center San Diego has established itself as a leader in the field of medicine and continues today as they propel their hospital into the 21st century.

What is a Fisher House?

Fisher Houses offer "a home away from home" at no cost for families of patients receiving medical care at military treatment facilities. Each Fisher House offers comfortable accommodations that allow military families to focus on the medical care and recovery of their loved one. The houses have well-stocked community kitchens and inviting living rooms. Other features include laundry facilities, housekeeping services, and common area computers with internet access.

Guests are warmly welcomed by caring and compassionate staff members who offer encouragement and provide families with information about the resources and services available to help meet their needs.

Who Manages the Fisher Houses?

All Navy and Marine Corps Fisher House operations fall under Commander, Navy Installations Command (CNIC) oversight. Fisher Houses are constructed and donated by the Fisher House Foundation, Inc., a national nonprofit organization established to assist with the coordination of private support and encourage public support for the construction of Fisher Houses. The houses are located in proximity to military medical treatment facilities.

Eligibility Requirements

The patient must be receiving medical treatment. The patient's family has traveled from at least 40 miles away. Additional requirements must be met.

For more information on eligibility, referrals and volunteer opportunities, please contact the appropriate Fisher House directly.

Navy and Marine Corps Fisher House Locations

- Bethesda, MD
Serving Walter Reed National Medical Center
(301) 857-9494
- San Diego, CA
Serving Naval Medical Center San Diego
(619) 532-9055
- Portsmouth, VA
Serving Naval Medical Center Portsmouth
(757) 953-6889
- Marine Corps Base Camp Lejeune, NC
Serving Naval Medical Center Camp Lejeune
(910) 450-3885
- Marine Corps Base Camp Pendleton, CA
Serving Naval Medical Center Camp Pendleton
(760) 763-5308

Referrals

Referrals may be prepared by physicians, nurses, chaplains, social workers, the American Red Cross, case managers, and/or patient administration.

Volunteer at the Fisher House!

Each Fisher House has a full-time staff, but depends on volunteers and voluntary support to enhance daily operations and program expansion. Please consider volunteering your time to help our courageous service members and their families.



Commander, Navy Installations Command NAVY & MARINE CORPS Fisher House Program

www.navyandmarinesfisherhouses.com

*Supporting America's military
in their time of need*





Bethesda Fisher Houses

Bethesda Fisher Houses
24 Stokes, Bethesda, MD 20814
301-857-9494
[@BethesdaFisherHouse](#)

Naval Support Activity (NSA) Bethesda, home of the Walter Reed National Military Medical Center, hosts five Fisher Houses. The Fisher Houses are located on the grounds of NSA Bethesda.



The first Fisher House was dedicated in 1990, followed by a second house in 1994. Three 20-room houses opened in 2010, with one of the homes dedicated solely to serving service members receiving treatment at the National Intrepid Center of Excellence. A total of 219 family members may be accommodated at the houses at any one time.



The Bethesda Fisher Houses offer 73 private rooms, 62 of which are ADA-compliant suites. They feature comfortably furnished guest rooms with bathrooms, fully-equipped kitchens, and living, dining and laundry rooms. All guest rooms are furnished with cable TV, phone with local and long-distance service, iron/ironing board, hairdryer, bed linens, towels, and hand soap. Each house has a guest computer and Wi-Fi.

The Bethesda Fisher Houses support the Walter Reed National Military Medical Center, which is the Navy's third largest health care facility, providing more than 12,500 ambulatory surgeries and 8,000 inpatient admissions each year.



Camp Lejeune Fisher House

Camp Lejeune Fisher House
4 Recovery Way, Camp Lejeune, NC 28547
910-450-3885
[@lejeunefisherhouse](#)

The Camp Lejeune Fisher House is the first to be located onboard a Marine Corps installation.

The House opened in September 2010 and is within walking distance of the Wounded Warrior Complex and Naval Medical Center Camp Lejeune. The complex includes the Warrior Battalion-East Headquarters, Warrior Hope and Care Center, Warrior Battalion-East Bachelor Enlisted Quarters, and the Intrepid Spirit.



The House offers 12 comfortably furnished guest suites, a fully-equipped kitchen, a quiet room, living room, dining room, laundry, and business center. All guest rooms are furnished with cable TV, phone with local and long-distance service, iron/ironing board, and a hair dryer. High-speed internet access is also provided.

The Camp Lejeune Fisher House supports Naval Hospital Camp Lejeune, which provides medical care for more than 75,000 active-duty and retired Marines, Sailors and Coast Guardsmen, as well as their families. The Naval Medical Center includes the main hospital and eight branch clinics located onboard Marine Corps Base Camp Lejeune and Marine Corps Air Station New River.



Camp Pendleton Fisher House

MCIWEST - Fisher House
Building 2014, San Jacinto Road, Oceanside, CA 92058
760-763-5308
[@fisherhousecp1](#)



The Camp Pendleton Fisher House opened in May 2015. The eight-suite, 8,000 square-foot home provides free temporary housing for more than 280 military families per year from across the country and provides nearly 3,000 nights of lodging annually. The Camp Pendleton Fisher House sits atop a hillside, allowing for a peaceful, beautiful view.



The House offers comfortably furnished guest rooms with bathrooms, fully-equipped kitchen, living and dining rooms, and a laundry facility. All guest rooms are furnished with cable TV, phone with local and long-distance service, iron/ironing board, and hair dryer. High-speed Wi-Fi access is available throughout the entire facility.

The Naval Medical Center at Camp Pendleton serves more than 70,000 active-duty and veteran members of the military and their families. Camp Pendleton is also host to a National Intrepid Center of Excellence satellite facility, which serves patients with mild traumatic brain injuries.



Portsmouth Fisher House

Portsmouth Fisher House
853 Fisher Drive, Portsmouth, VA 23708
757-953-6889
[@FisherHousePortsmouthVA](#)

The Portsmouth Fisher House is located at Naval Medical Center Portsmouth. It's about a 5-minute walk from the House to the main hospital building.

Dedicated in 1995, the House offers six spacious rooms and one suite with accommodations for up to 20 persons. The home and grounds feature a common kitchen, laundry room, living room, dining room, outdoor gas grill, rose garden, private gazebo, and a children's play area. Pack and plays, along with high chairs, are available. All guest rooms have cable TV, phones with local and long-distance service, remote-controlled ceiling fan, a guest internet station, and free Wi-Fi.

Naval Medical Center Portsmouth is the Navy's oldest operating hospital. This state-of-the-art medical center delivers health care to more than 400,000 active-duty military personnel, family members and retirees in the Hampton Roads area (including the cities of Norfolk, Virginia Beach, Portsmouth, Chesapeake, Suffolk, Hampton, and Newport News). The region is homeport to about 186 ships, 1,300 aircraft and 118,000 Sailors and Marines assigned to the Atlantic Fleet.

